



# **Olmsted Community Action Program (CAP)**

## ***Overview of Agency***

**AMERICA'S LARGEST POVERTY FIGHTING NETWORK**

This is a self-paced overview.

**\*\* Click the ENTER OR PAGE DOWN KEY to advance the slides.**

When finished, click ESC to end the program

*We want to live in a place where we all have the opportunity and resources necessary to contribute and participate fully in our economy and democracy.*

*We all fare better when no one is left to fall too far behind and the economy works for everyone.*

Mobility agenda ([www.mobilityagenda.org](http://www.mobilityagenda.org))

# We believe...

- ▶ Poverty must be addressed at all levels of the community, and that eliminating poverty is the responsibility of the whole community.
- ▶ All people should have the opportunity to earn an adequate income and have resources to meet their family's basic needs.
- ▶ Tax policies at all levels of government should be fair and based on ability to pay.
- ▶ Elected officials need to represent all people equally and promote involvement and opportunities to influence public policy.

# What is a Community Action Agency?



A private non-profit or public organization created by the federal government in 1964 to combat poverty.

- *Olmsted CAP is the only public program in Minnesota and was created in 1983.*
- *States vary in the mix of non-profit and public programs; Minnesota has favored the non-profit model*

# Community Action Agencies have a unique board structure

»» The CAP *tripartite board structure* is designed to promote the participation of the entire community in the reduction or elimination of poverty.

*Board membership must include equal representation from:*

- *Elected public officials or their designees*
- *Representatives of low income people*
- *Representatives of business, industry, labor, religious, social welfare, and other private groups in the community*

# CAP is part of a state and national network



- There are 38 grantees in Minnesota.
- Olmsted CAP participates in the Minnesota Community Action Association ([www.mncaa.org](http://www.mncaa.org)) and the National Community Action Partnership (<http://www.communityactionpartnership.com>)

# CAP is block grant funded



- Core funding is provided by the federal government through the Community Services Block Grant (CSBG)
- Minnesota also provides state aid to local agencies (Minnesota Community Action Grant or MNCA)
- In turn, agencies leverage a wide variety of other funds for specific services they provide.

## Olmsted CAP functions as ...

### a Conduit

*... a channel through which poverty-related issues within the community may be identified / addressed*

### an Advocate

*... establishing supportive relationships with low-income people and seeking affirmative anti-poverty public policies*

### a Program Provider

*... delivering aid programs and other direct-services for low-income people*

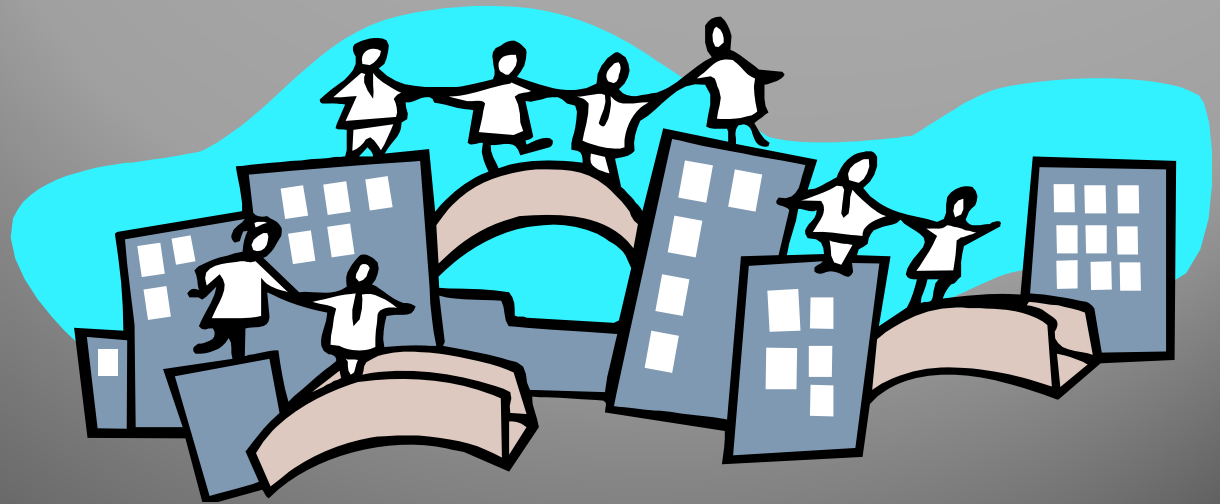
# **Mission Statement**

**of Olmsted Community Action Program (CAP)**

*“Partnering with community to build opportunities  
for families and individuals  
to achieve economic self-reliance”*

# Partnering with Community ...

*We need others – the entire community – to help*



## to Build Opportunities ...

*A hand up, not a hand out,  
and supportive public policies  
are the best strategies to ensure  
people get and stay out of poverty*



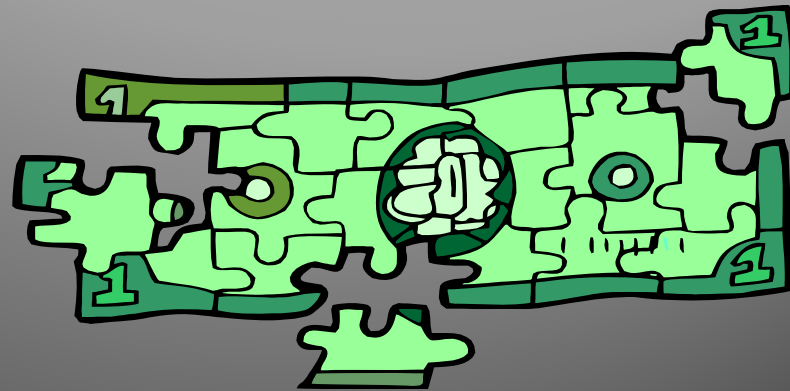
## for Families and Individuals ...

*We serve single adults as well as those with children*

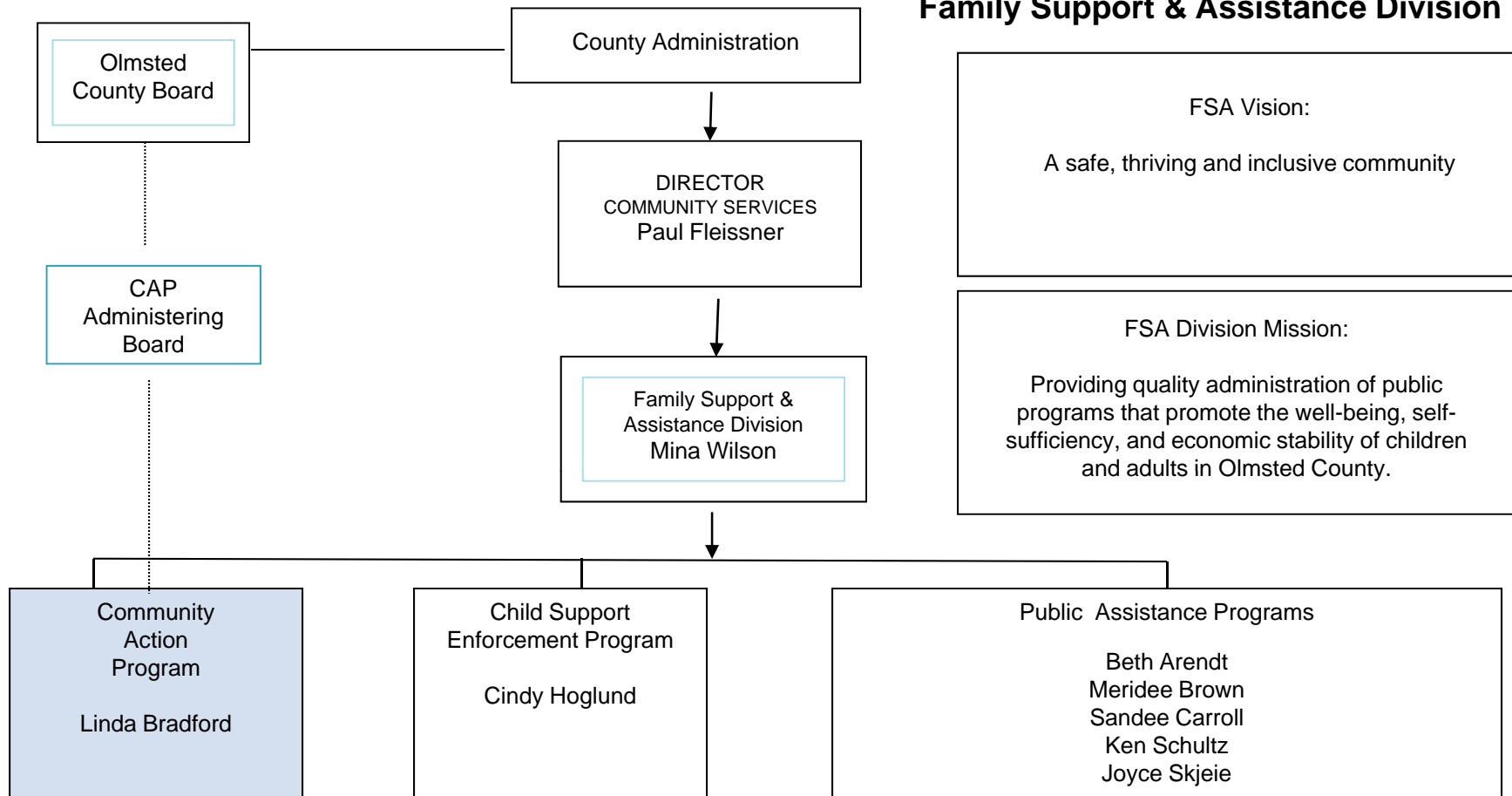


## to Achieve Economic Self-Reliance

*Having income or a job that pays a wage sufficient for the family or individual to meet their basic needs and which is above the Federal Poverty Level.*



## Family Support & Assistance Division



### FSA Vision:

A safe, thriving and inclusive community

### FSA Division Mission:

Providing quality administration of public programs that promote the well-being, self-sufficiency, and economic stability of children and adults in Olmsted County.

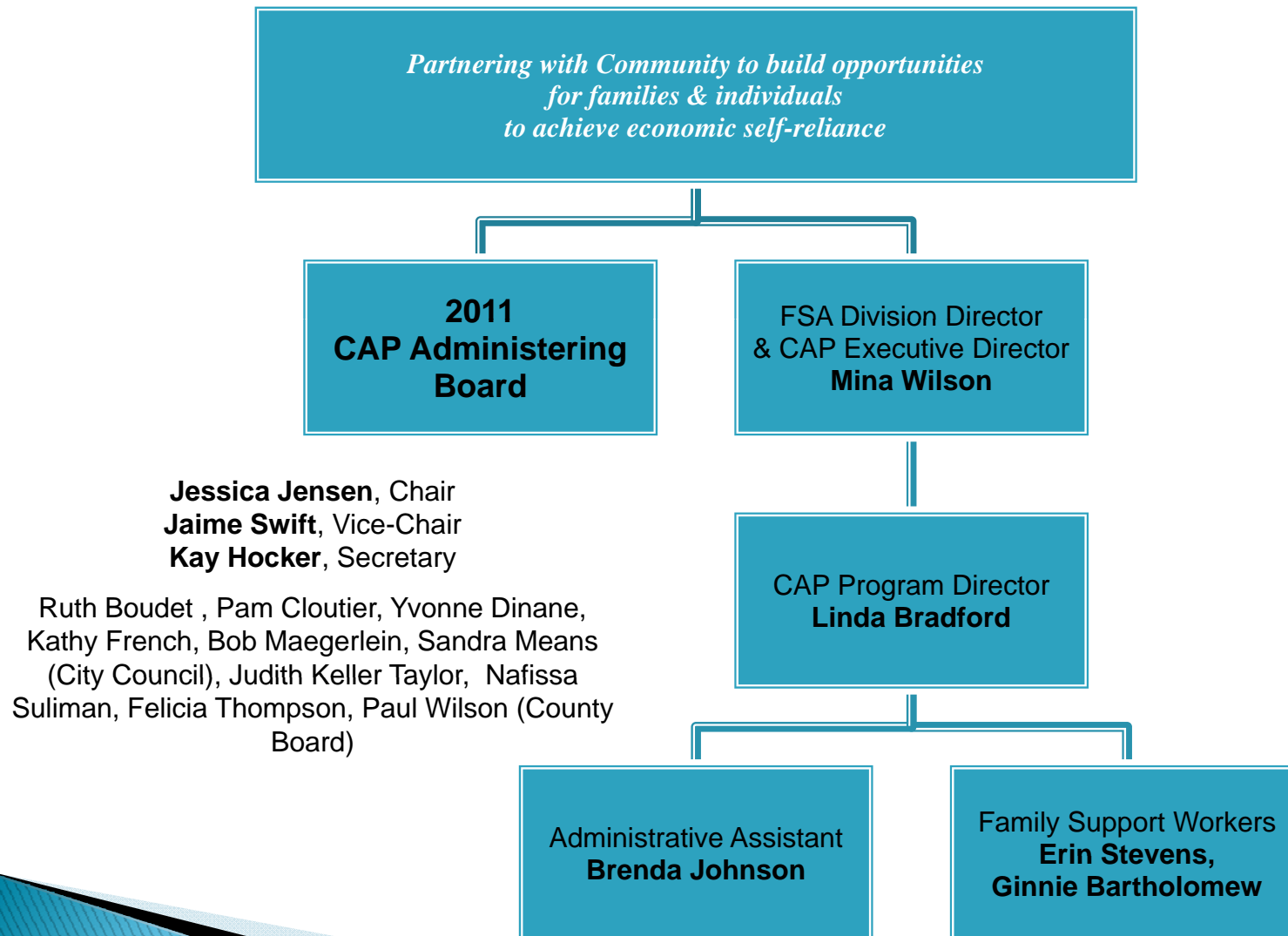
- ▶ Homeless prevention aid
- ▶ Family Assets for Independence in Minnesota (FAIM)
- ▶ SSI application assistance
- ▶ Information & Referral
- ▶ MA/FS Application Assistance

- ▶ Location of absent parents
- ▶ Establishment of parentage
- ▶ Establishment & enforcement of Support Orders
- ▶ Collection & distribution of support payments

- ▶ Food Stamps
- ▶ General Assistance, Emergency GA
- ▶ Minnesota Supplemental Assistance
- ▶ Migrant Workers
- ▶ Energy Assistance Program (EAP)
- ▶ Program Integrity
- ▶ Collections
- ▶ Employment Services
- ▶ MFIP Case management
- ▶ Child Care Assistance

- ▶ Medical Assistance
- ▶ General Assistance Medical Care
- ▶ Nursing Homes
- ▶ Foster Care
- ▶ Group Residential housing
- ▶ Waiver health care
- ▶ Minnesota Care
- ▶ MA Transportation
- ▶ PMAP Advocacy
- ▶ Performance Management & Quality Control

# Organizational Chart



# Results Oriented Management & Accountability

*of Olmsted Community Action Program (CAP)*

## **Low-income people will become more self-sufficient**

*“Family Assets For Independence In Minnesota” (FAIM) & Budgeting, Assistance with SSI applications, Stable Housing Assistance*

## **The conditions in which low-income people live are improved**

*The ADVOCATE newsletter, Information & Referral, Outreach Services*

## **Low-income people own a stake in their community**

*Involvement with Project Community Connect, Personal empowerment activities*

# Results Oriented Management & Accountability

*of Olmsted Community Action Program (CAP)*

## **Partnerships among supporters and providers of services to low-income people are achieved**

*Leadership & facilitation with community coordination & collaboration, Homeless Response Team, Emergency Food & Shelter Program*

## **Agencies increase their capacity to achieve results**

*Board & staff development, capacity-building, community education*

## **Low-income people, especially vulnerable populations, achieve their potential by strengthening family and other supportive systems**

*Short-term Crisis assistance and support services*

**CSBG.** Community Services Block Grant. One of the core funding block grants for community action programs. Federal dollars.

**CAG.** Minnesota Community Action Grant. One of the core funding block grants for community action programs. State dollars.

**FHPAP.** Homeless Prevention Assistance Program. Cash assistance to prevent low income households from becoming homeless.

**EFSP.** Emergency Food & Shelter Program. Federal Emergency Management Agency funding.

**Application Assistance/Outreach.** Assistance to people who may be eligible for public benefits such as food support and health care.

**SSI Application Assistance.** Assistance to disabled individuals in applying for Social Security benefits

## CAP Budget - 2011

### *Basic CAP Revenues*

CSBG	161,690
CAG	50,062
CHIPRA	89,739
FHPAP	32,710
Healthcare Assistance/ Outreach Grant	17,049
EFSP	1,221
Food Support Outreach Grant	15,453
SSI Contract Earnings	36,861
Sub-Total:	<u>\$404,785</u>

### *Other Leveraged Funds:*

County Levy	\$75
-------------	------

**Total CAP Funding:** **\$404,860**

# Federal Poverty Guidelines for 2011

for all states (except Alaska and Hawaii) and the District of Columbia

Family Size	Poverty Level	Hourly Wage* 100% of Poverty	133% of Poverty	200% of Poverty
1	<b>\$10,890</b>	\$5.24	\$14,484	\$21,780
2	<b>14,710</b>	\$7.07	19,564	29,420
3	<b>18,530</b>	\$8.91	24,645	37,060
4	<b>22,350</b>	\$10.75	29,726	44,700
5	<b>26,170</b>	\$12.58	34,806	52,340
6	<b>29,990</b>	\$14.41	39,887	59,980
7	<b>33,810</b>	\$16.25	44,967	67,620
8	<b>37,630</b>	\$18.04	49,915	75,060

\* Hourly wage based on 2,080 annual working hours (full-time/40-hours/week)

## Sampling of programs in which eligibility is partially based on Federal Poverty Guidelines:

Below 185% of FPG

- WIC, Reduced price school meals is between 130-185%; Minnesota Cold Weather Rule

Below 133% of FPG

- Medical Assistance; MinnesotaCare 133-275% of FPG

Below 130% of FPG

- Food Stamps/Support, Free school meals

Below 115% of FPG

- Minnesota Family Investment Program (MFIP)

Below 100% of FPG

- Head Start

## Common Acronyms

CAP/CAA	<u>C</u> ommunity <u>A</u> ction <u>P</u> rogram or <u>C</u> ommunity <u>A</u> ction <u>A</u> gency
OEO	Office of Economic Opportunity. The federal and state offices that administer funding and services provided by community action agencies.
DHS	Department of Human Services. State agency for Minnesota's human services.
EAP	Energy Assistance Program. Provides cash grants for low income households to help with utility costs.
IVA	Public Assistance section of the federal Social Security Act that includes programs such as medical assistance.
IVD	Child support section of the federal Social Security Act that relates to enforcement of child support.
MA	Medical Assistance. The public health care program for low income people. Federally it is referred to as Medicaid.
YTD	Year-to-date. Usually used when reporting fiscal or service data.

*“If the misery of our poor  
be caused not by the laws of nature,  
but by our institutions,  
great is our sin.”*

*Charles Darwin*