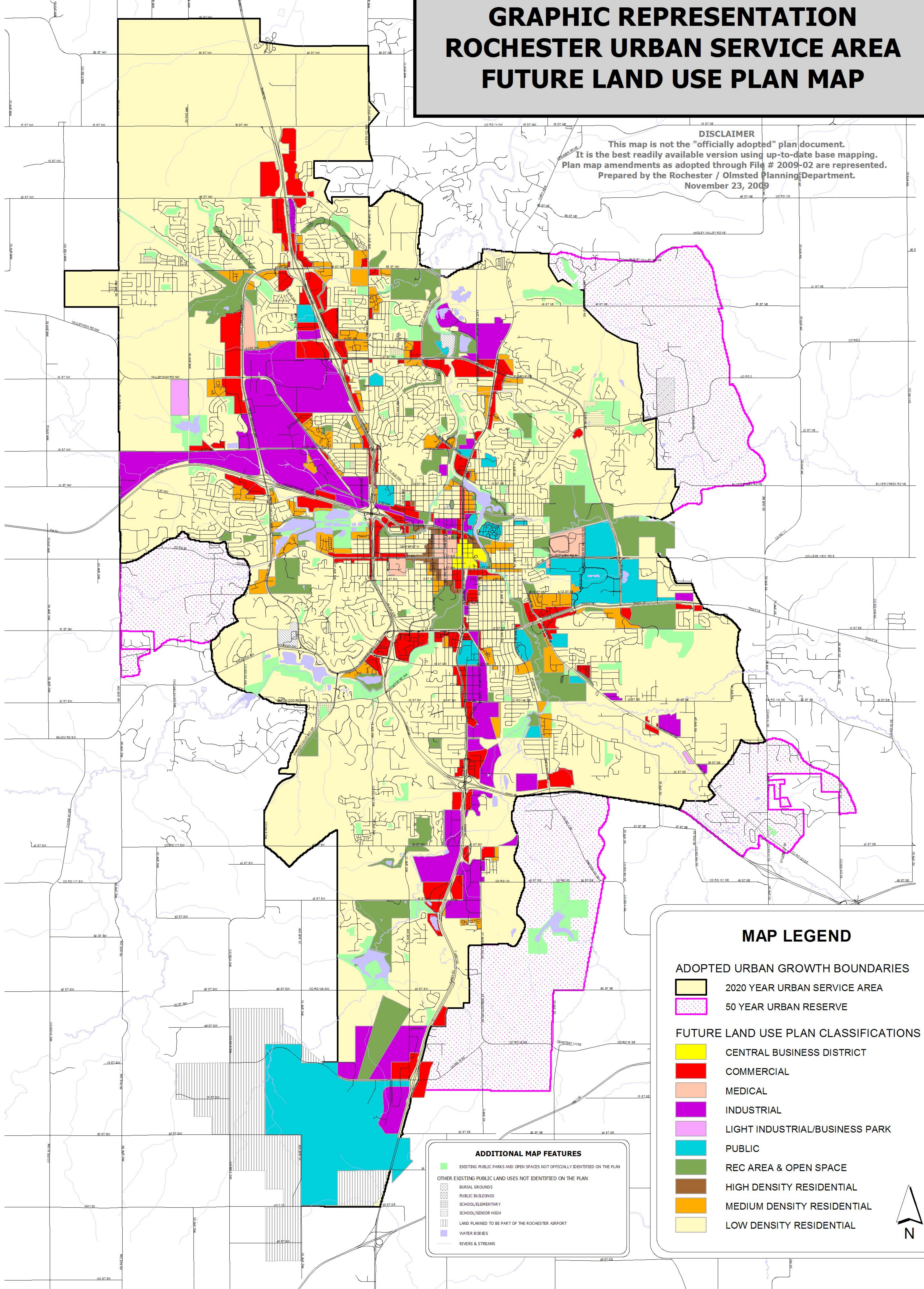


GRAPHIC REPRESENTATION ROCHESTER URBAN SERVICE AREA FUTURE LAND USE PLAN MAP

DISCLAIMER
This map is not the "officially adopted" plan document.
It is the best readily available version using up-to-date base mapping.
Plan map amendments as adopted through File # 2009-02 are represented.
Prepared by the Rochester / Olmsted Planning Department.
November 23, 2009



MAP LEGEND

ADOPTED URBAN GROWTH BOUNDARIES

- 20 YEAR URBAN SERVICE AREA
- 50 YEAR URBAN RESERVE

FUTURE LAND USE PLAN CLASSIFICATIONS

- CENTRAL BUSINESS DISTRICT
- COMMERCIAL
- MEDICAL
- INDUSTRIAL
- LIGHT INDUSTRIAL/BUSINESS PARK
- PUBLIC
- REC AREA & OPEN SPACE
- HIGH DENSITY RESIDENTIAL
- MEDIUM DENSITY RESIDENTIAL
- LOW DENSITY RESIDENTIAL

ADDITIONAL MAP FEATURES

- EXISTING PUBLIC PARKS AND OPEN SPACES NOT OFFICIALLY IDENTIFIED ON THE PLAN
- OTHER EXISTING PUBLIC LAND USES NOT IDENTIFIED ON THE PLAN**
- BURIAL GROUNDS
- PUBLIC BUILDINGS
- SCHOOL/ELEMENTARY
- SCHOOL/SENIOR HIGH
- LAND PLANNED TO BE PART OF THE ROCHESTER AIRPORT
- WATER BODIES
- RIVERS & STREAMS

