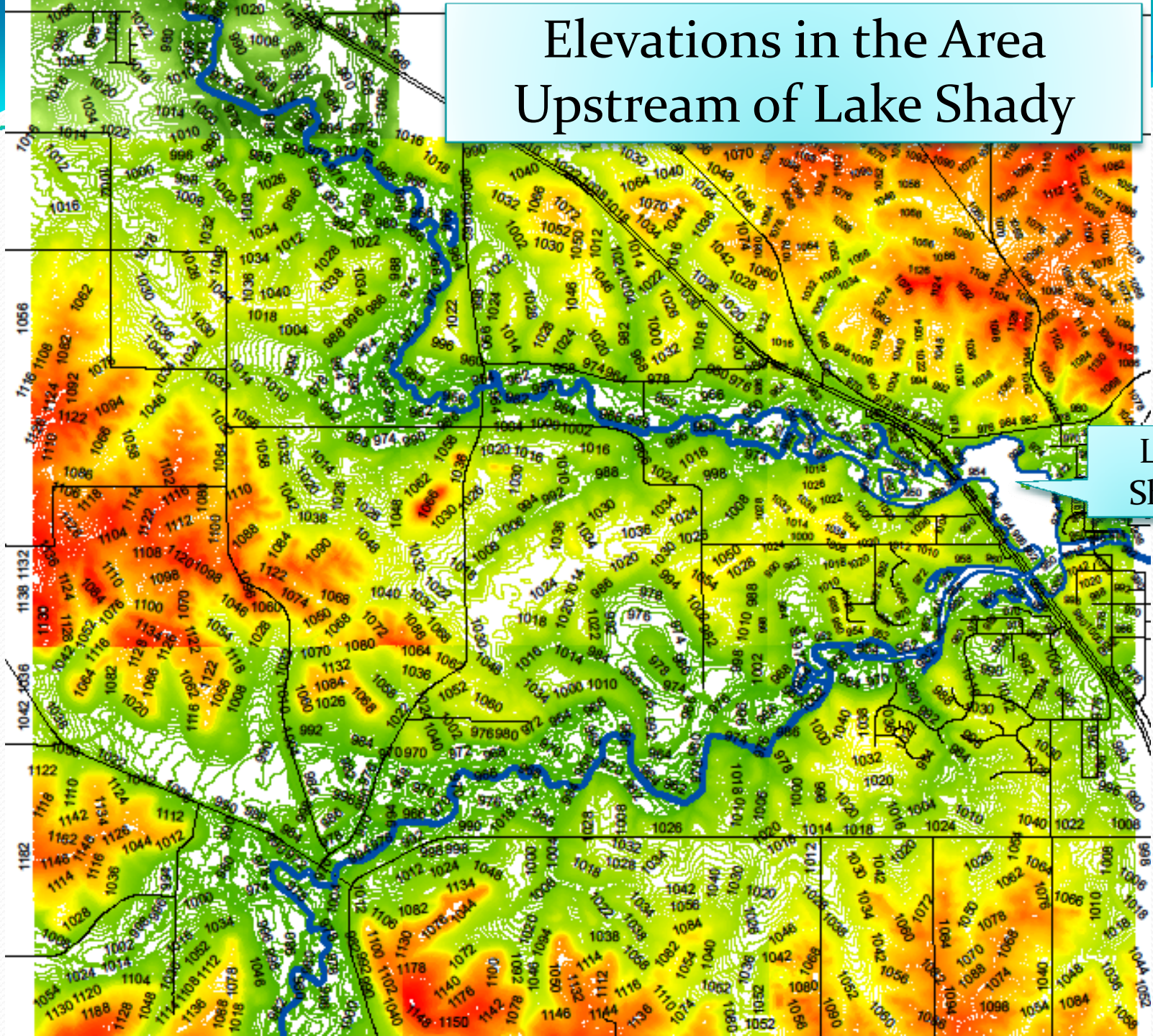


Lidar Elevation Data for the Lake Shady Area

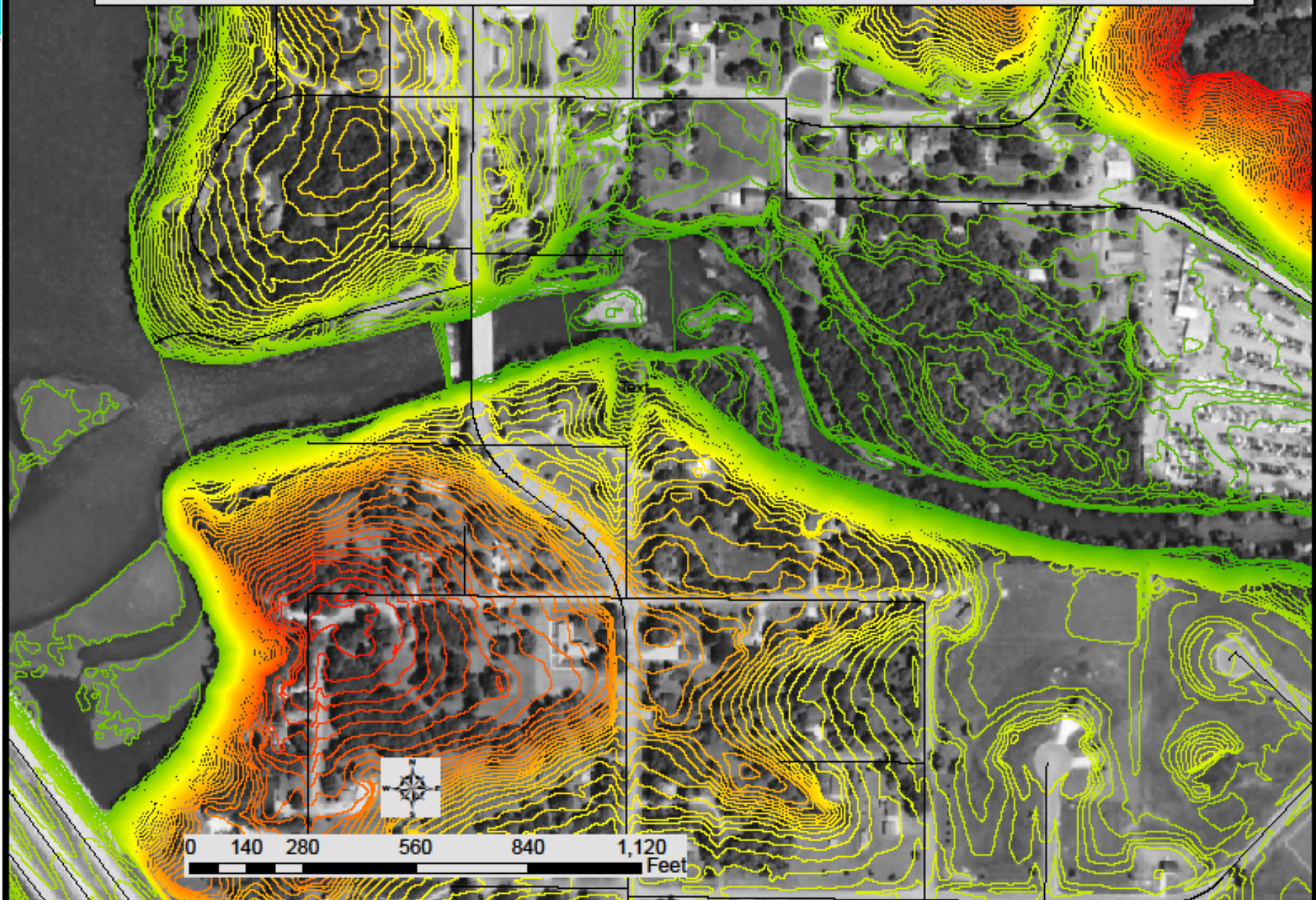
Terry Lee, Coordinator
Olmsted County Environmental Services
2116 Campus Dr. SE
Rochester MN 55904
Phone: 507-328-6723
Email: Lee.terry@co.olmsted.mn.us

Elevations in the Area Upstream of Lake Shady

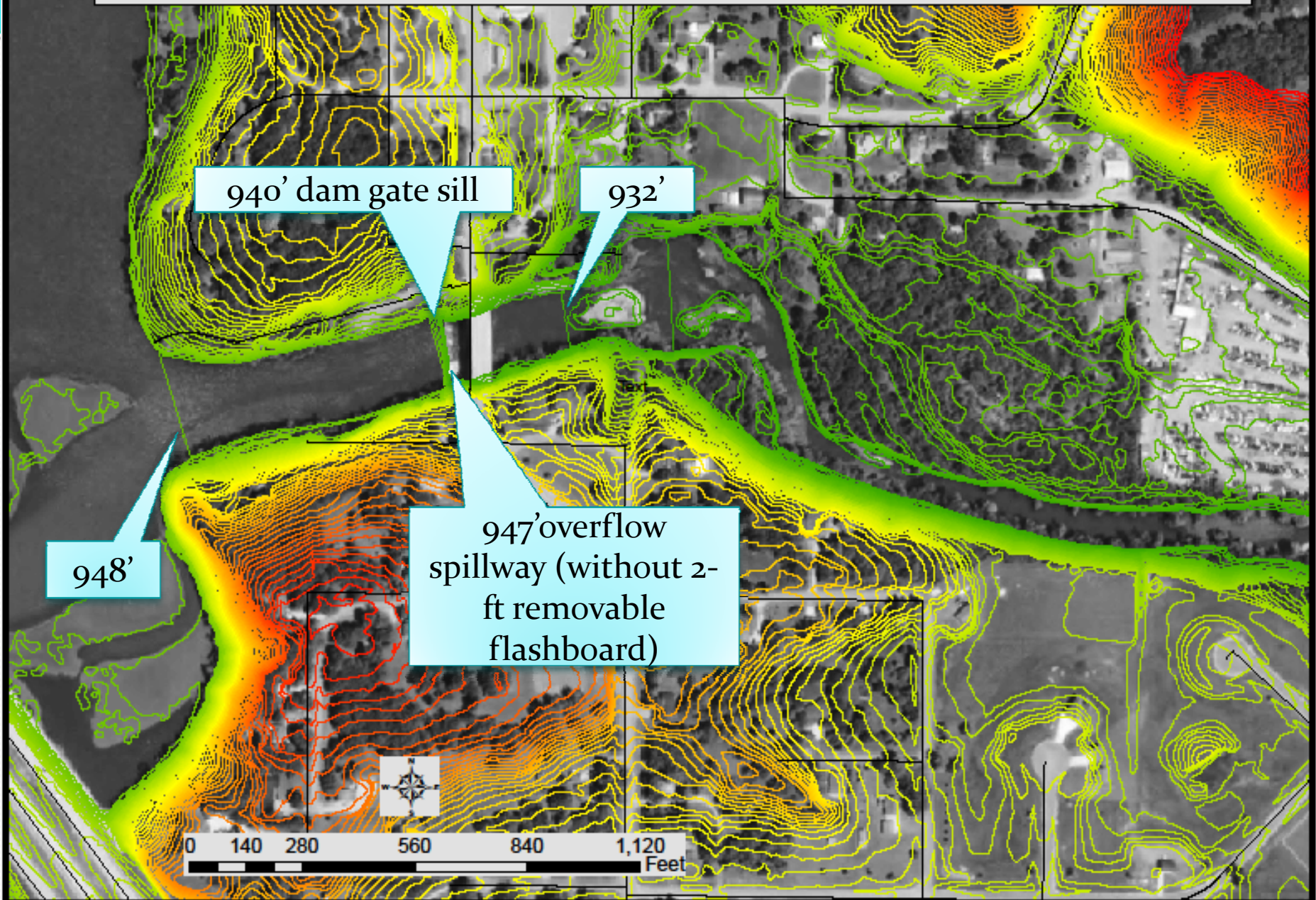


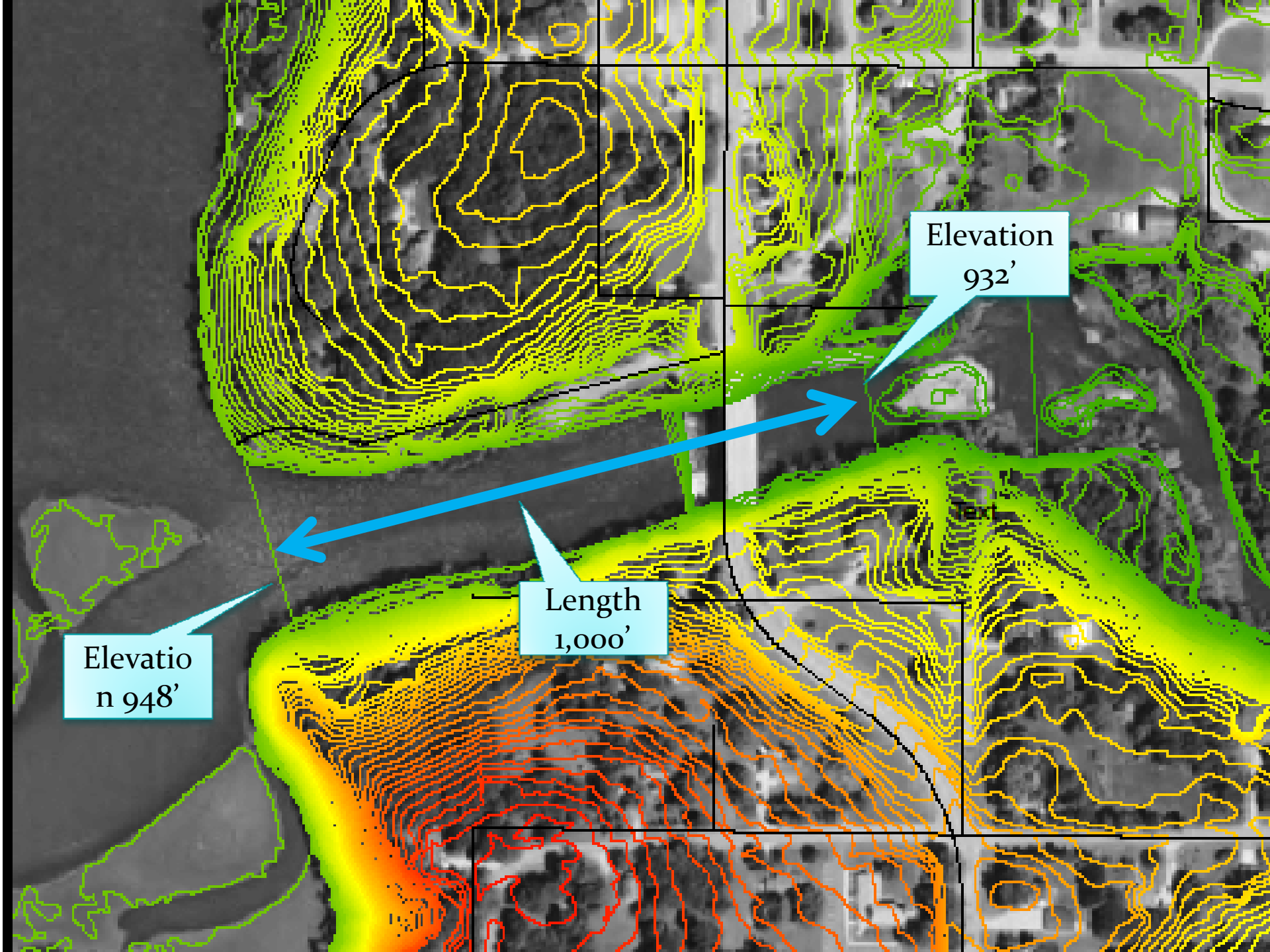
Lake
Shady

Elevations in the Area of the Lake Shady Dam



Elevations in the Area of the Lake Shady Dam





Elevation
932'

Length
1,000'

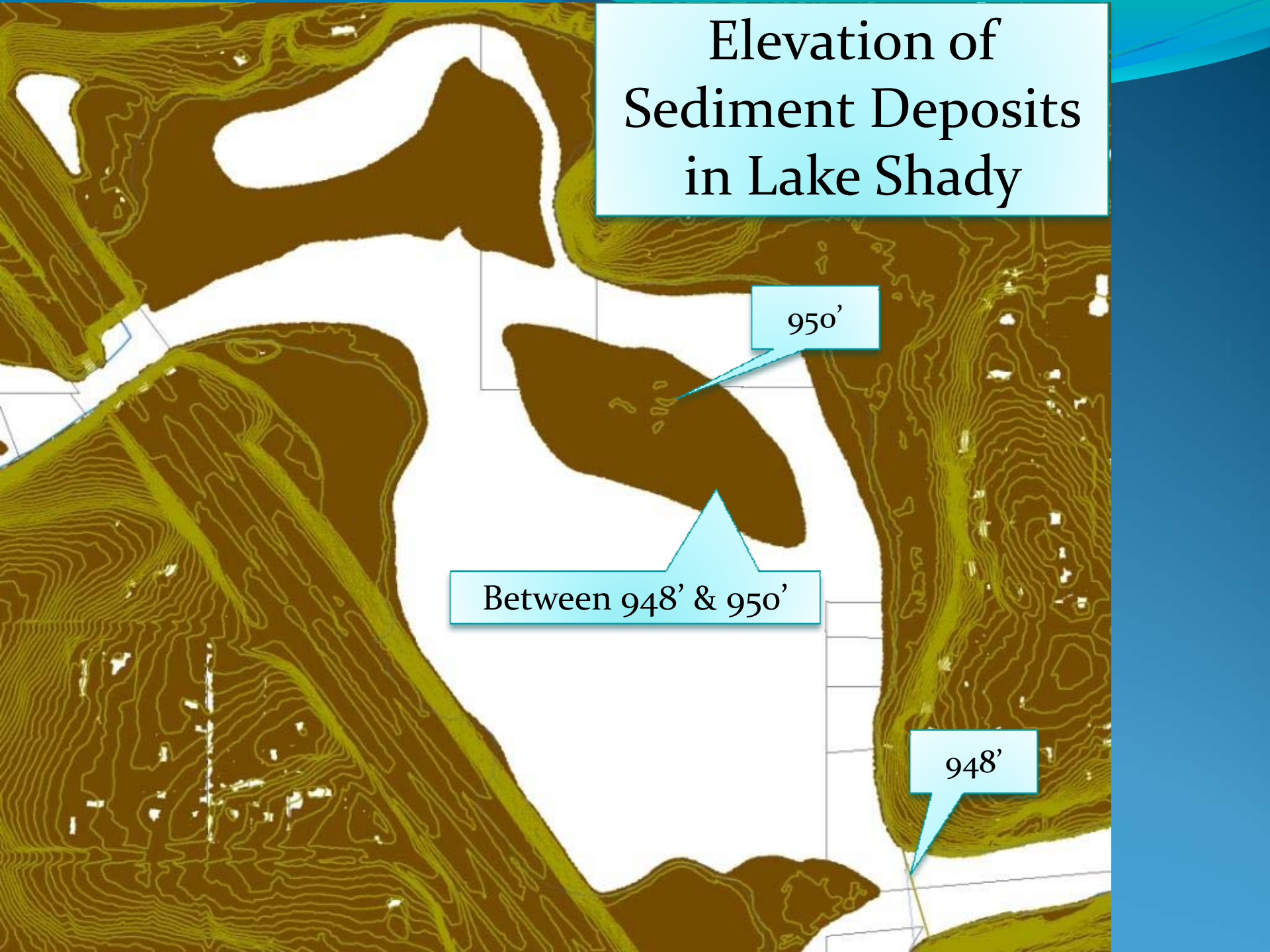
Elevatio
n 948'

Elevation of Sediment Deposits in Lake Shady

950'

Between 948' & 950'

948'



Open Water and Wetlands in the Area West of Hwy 52 Towards Pine Island

