



**GEOTECHNICAL DATA REPORT  
T.H. 52 ORONOCO DESIGN-BUILD  
ORONOCO, MINNESOTA**

**HNTB PROJECT NO. 36324**

Prepared for:

MN/DOT District 6  
2900 48<sup>th</sup> Street N.W.  
Rochester, Minnesota 55901

August 18, 2005

Prepared by:

HNTB Corporation  
11414 West Park Place, Suite 300  
Milwaukee, Wisconsin 53224-3526



**HNTB**

MINNESOTA DEPARTMENT OF TRANSPORTATION - GEOTECHNICAL SECTION  
 LABORATORY LOG & TEST RESULTS - SUBSURFACE EXPLORATION



**Terracon** UNIQUE NUMBER 66974

This boring was taken by Terracon Consultants, Inc. under a consultant contract for Mn/DOT

U.S. Customary Units

State Project		Bridge No. or Job Desc.		Trunk Highway/Location		Boring No.		Ground Elevation		
5508-84				52		R-43		951.0 (Survey)		
Location TH 52 NB, 1816+00, 80'LT						Drill Machine CME 850, Rig #37		SHEET 1 of 2		
Co. Coordinate: X=599149 Y=219054 (ft.)						Hammer CME Automatic Calibrated		Drilling Completed 6/21/05		
Latitude (North)=44°09'35.40" Longitude (West)=92°32'19.97"										
DEPTH	Depth	Lithology	Classification	Drilling Operation	BPF	MC	COH	Y	Soil	Other Tests
	Elev.				REC	RQD	ACL	Core Breaks		Rock
					(%)	(%)	(psf)	(pcf)		
		WATER, Shady Lake		A/P						SPT Hammer measured at 80% efficiency on 7-28-05.
	2.5 948.5			WH		80				
	5			A/P						
				WH		55				
		ORGANIC SILTY CLAY LOAM, black, very soft, A-8, alluvium/swamp deposit		A/P						
	10					47				DISTURBED SAMPLE
				A/P						
				WH		37				
				A/P						
	15			WH		NSR				
				A/P						
	16.5 934.5		SAND, a little gravel, coarse to fine grained, gray, waterbearing, medium dense, A-1-b, alluvium		13	23				
	17.5 933.5			A/P						
	20		GRAVELLY SAND, fine to coarse grained, gray, waterbearing, medium dense, A-1-b, alluvium		13	11				
				A/P						
	22.0 929.0		SAND WITH GRAVEL, coarse to fine grained, gray, waterbearing, medium dense, A-1-b, alluvium		14	14				
				A/P						
	25									

MINNESOTA DEPARTMENT OF TRANSPORTATION - GEOTECHNICAL SECTION  
 LABORATORY LOG & TEST RESULTS - SUBSURFACE EXPLORATION



**Terracon** UNIQUE NUMBER 66974

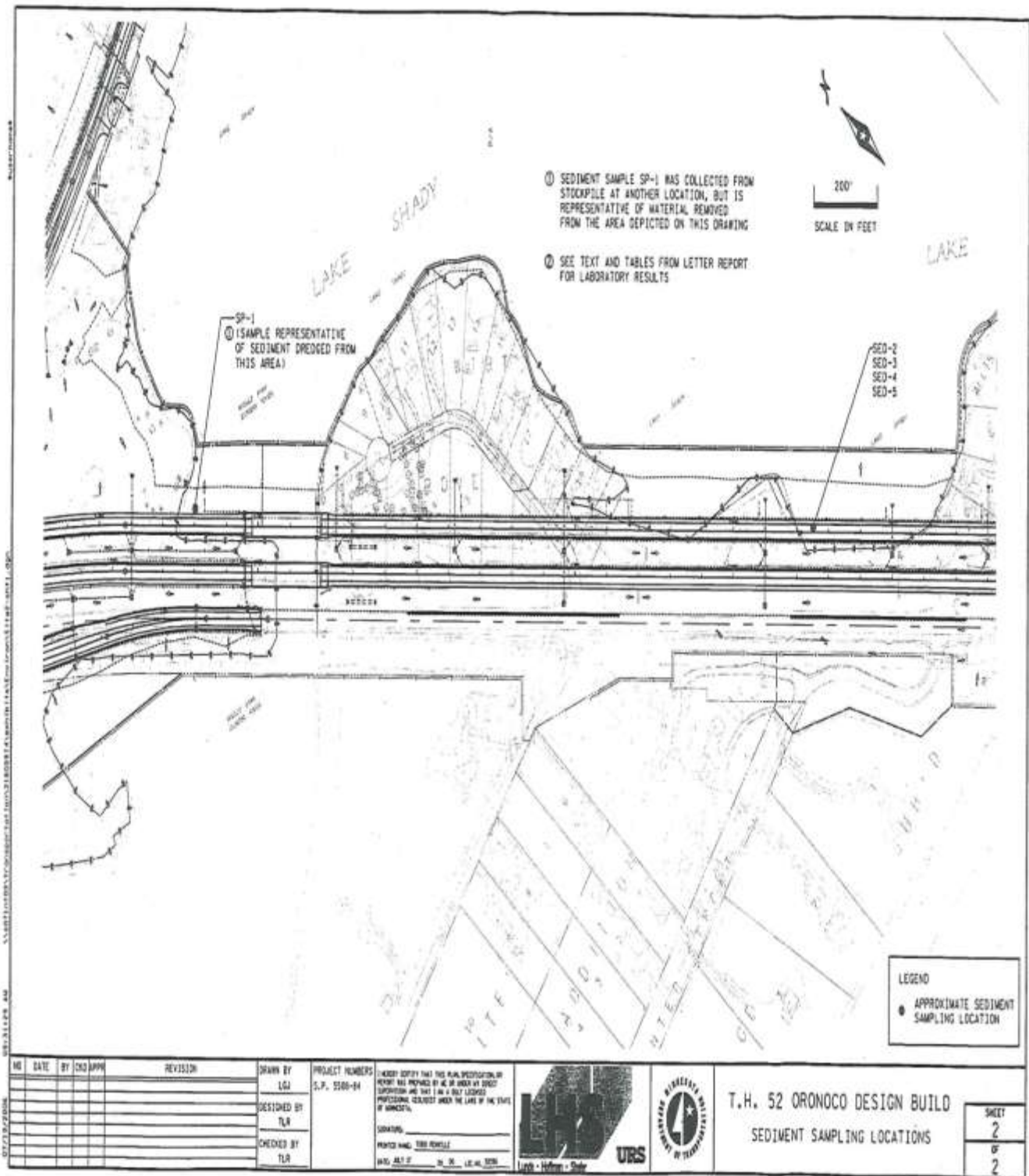
This boring was taken by Terracon Consultants, Inc. under a consultant contract for Mn/DOT

U.S. Customary Units

Mn/DOT GEOTECHNICAL SECTION - LOG & TEST RESULTS

SHEET 2 of 2

State Project		Bridge No. or Job Desc.		Trunk Highway/Location		Boring No.		Ground Elevation	
5508-84				52		R-43		951.0 (Survey)	
DEPTH	Depth	Lithology	Classification	Drilling Operation	BPF	MC	COH	Y	Other Tests Or Remarks
	Elev.				REC	RQD	ACL	Core Breaks	
					(%)	(%)	(psf)	(pcf)	Formation or Member
	27.0 924.0	[Lithology symbol: sand with gravel]	SAND WITH GRAVEL, coarse to fine grained, gray, waterbearing, medium dense, A-1-b, alluvium (continued)	X PD	8	20			
	30.0 921.0		LOAMY SAND, a little gravel, fine to coarse grained, brown, lenses of sand and organic clay, medium dense, A-2-4, alluvium	X PD	9	23			
30		[Lithology symbol: sand with gravel]	SAND WITH GRAVEL, coarse to fine grained, brown, waterbearing, medium dense to dense, A-1-b, alluvium	X PD	9	17			
				X PD	4	14			
35				X PD	23	15			
				X PD	29	13			
40		[Lithology symbol: sand with gravel]		X PD	13	13			
				X PD	15	11			
	43.5 907.5	Bottom of Hole - 43.5'							



- ① SEDIMENT SAMPLE SP-1 WAS COLLECTED FROM STOCKPILE AT ANOTHER LOCATION, BUT IS REPRESENTATIVE OF MATERIAL REMOVED FROM THE AREA DEPICTED ON THIS DRAWING
- ② SEE TEXT AND TABLES FROM LETTER REPORT FOR LABORATORY RESULTS

SP-1  
 (SAMPLE REPRESENTATIVE OF SEDIMENT DREGGED FROM THIS AREA)

SED-2  
 SED-3  
 SED-4  
 SED-5

LEGEND  
 ● APPROXIMATE SEDIMENT SAMPLING LOCATION

NO.	DATE	BY	CHK APPR	REVISION

DRAWN BY  
 LGA

DESIGNED BY  
 TLR

CHECKED BY  
 TLR

PROJECT NUMBERS  
 S.P. 5500-04

I HEREBY CERTIFY THAT THIS PLAN, SPECIFICATION OR REPORT WAS PREPARED BY ME OR UNDER MY DIRECT SUPERVISION AND THAT I AM A FULLY LICENSED PROFESSIONAL ENGINEER UNDER THE LAWS OF THE STATE OF MINNESOTA.

DATE: 05.17.07



T.H. 52 ORONOCA DESIGN BUILD  
 SEDIMENT SAMPLING LOCATIONS

SHEET  
 2  
 OF  
 2