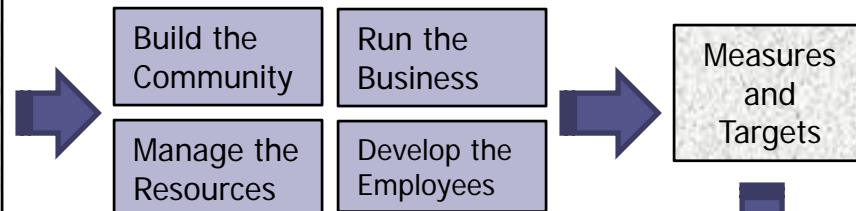




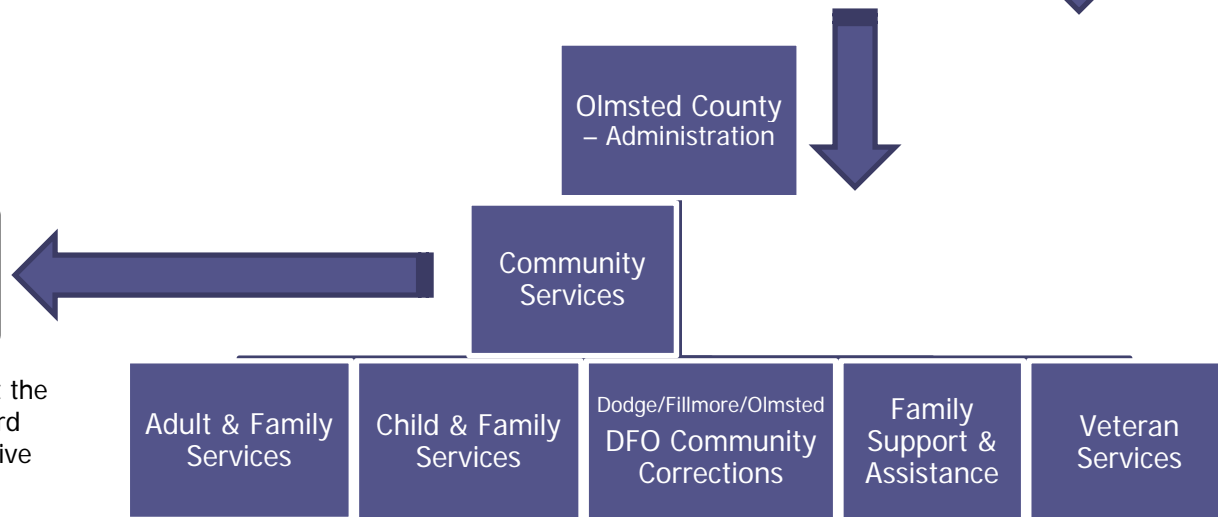
Linking the Balanced Scorecard to Budgeting

Mission: Community Services partners for the safety, well-being, and stability of children, families and adults in Olmsted County.
Values: Respect, Diversity, Partnering, Accountability, Family-friendly Workplace, Innovation, Responsiveness, Ethical Behavior, Community Involvement, Choice, Professionalism
Vision: **A safe, thriving, and inclusive community.**
Strategy: ↔ Assure a safe and thriving community through service delivery. ↔ Demonstrate sound fiscal management. ↔ Maintain Operational Excellence. ↔ Promote a respectful, diverse, and culturally competent workforce.

Balanced Scorecard



Cascaded Balanced Scorecards



Balanced Scorecards Drive Budgets

Operating and Capital (where applicable) Budgets

Investments necessary to support the achievement of Balanced Scorecard targets across the organization drive the budgeting process.

Department and associated Divisions develop Balanced Scorecards based on influencing high-level strategic priorities. Each scorecard includes initiatives necessary to achieve Scorecard targets.