

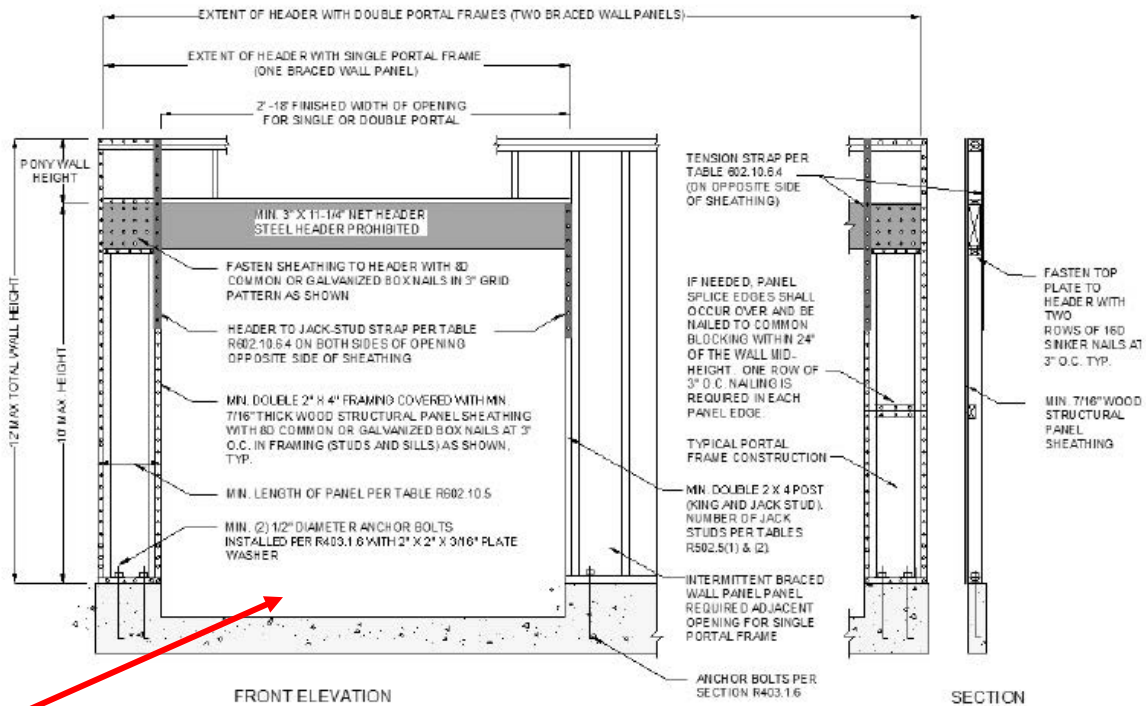
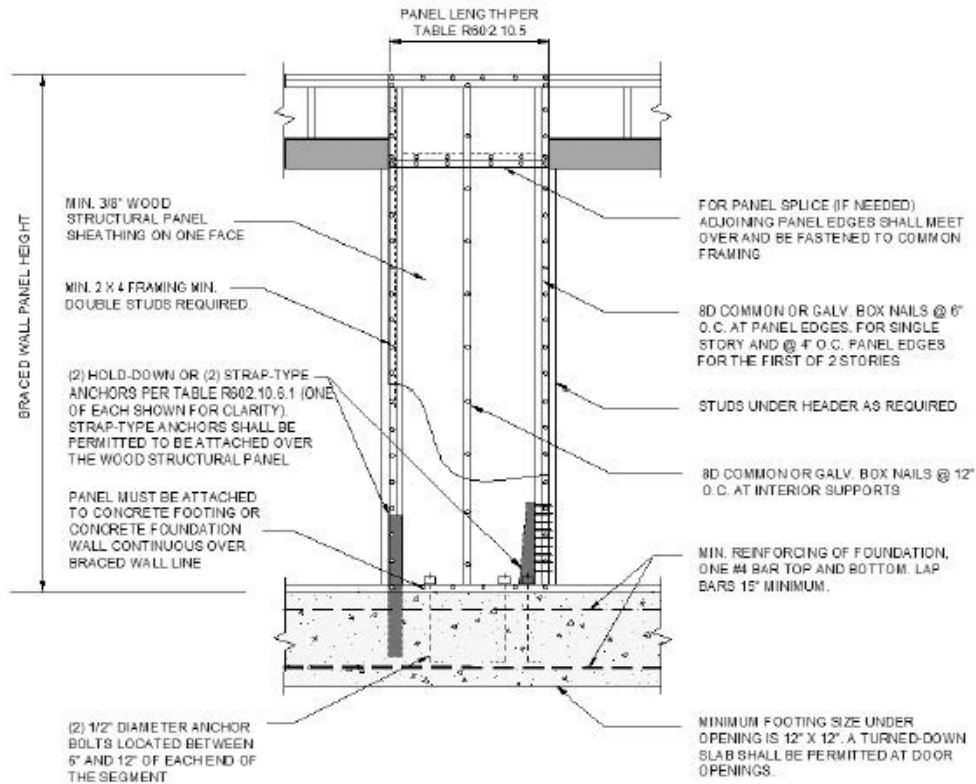








**R602.10.6.1 Method ABW: Alternate braced wall panels.**


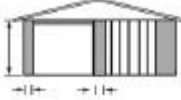


**R602.10.6.3 Method PFG: Portal frame at garage door openings in Seismic Design Categories A, B and C.**

**R602.10.4 Construction methods for braced wall panels.**

Intermittent and continuously sheathed *braced wall panels* shall be constructed in accordance with this section and the methods listed in Table R602.10.4.

**TABLE R602.10.4 BRACING METHODS**

METHODS, MATERIAL	MINIMUM THICKNESS	FIGURE	CONNECTION CRITERIA <sup>a</sup>	
			Fasteners	Spacing
<b>ABW</b> Alternate braced wall	$\frac{3}{8}$ "		See <a href="#">Section R602.10.6.1</a>	See <a href="#">Section R602.10.6.1</a>
<b>PFG</b> Portal frame at garage	$\frac{7}{16}$ "		See <a href="#">Section R602.10.6.3</a>	See <a href="#">Section R602.10.6.3</a>

\*\*These are 2 common methods uses for wall bracing at opening locations. Please feel free to contact building department with any questions.

For SI: 1 inch = 25.4 mm, 1 foot = 305 mm, 1 degree = 0.0175 rad, 1 pound per square foot = 47.8 N/m<sup>2</sup>, 1 mile per hour = 0.447 m/s.

- a. Adhesive attachment of wall sheathing, including Method GB, shall not be permitted in Seismic Design Categories C, D<sub>0</sub>, D<sub>1</sub> and D<sub>2</sub>.
- b. Applies to panels next to garage door opening when supporting gable end wall or roof load only. May only be used on one wall of the garage. In Seismic Design Categories D<sub>0</sub>, D<sub>1</sub> and D<sub>2</sub>, roof covering dead load may not exceed 3 psf.
- c. Garage openings adjacent to a Method CS-G panel shall be provided with a header in accordance with Table R502.5(1). A full height clear opening shall not be permitted adjacent to a Method CS-G panel.

The language & depictions in this hand out is meant as a guide for the construction code & building process and may not contain exact code language. For exact code you may go online at [www.revisor.mn.gov](http://www.revisor.mn.gov) or contact the Olmsted County Planning Department.



