

January - December 2015
Olmsted County Inspection's Division

Code	Building Permits	2015		2014	
		No.	Valuation	No.	Valuation
	<u>New Residential</u>				
101	1 Family (Detached)	37	\$9,588,055	35	\$8,208,552
102	1 Family (Attached)	2	\$315,964	4	\$598,860
103	2 Family Dwelling	0	\$0	0	\$0
104	3-4 Unit Building	0	\$0	4	\$683,322
105	5 Unit Building	0	\$0	0	\$0
438	Garage	24	\$1,237,830	15	\$805,131
	<u>Residential</u>				
432	Deck	54	\$204,939	46	\$164,440
433	Addition	16	\$426,535	12	\$300,889
434	Alterations	80	\$787,655	207	\$1,878,689
439	Garage Addition	6	\$148,500	3	\$92,247
	<u>New Commercial/Indust.</u>				
213	Hotel or Motel	0	\$0	0	\$0
318	Recreational	1	\$11,105	0	\$0
319	Church / Religious	0	\$0	0	\$0
320	Industrial / Warehouse	4	\$2,227,190	0	\$0
321	Parking Garage	0	\$0	0	\$0
322	Service / Repair Station	1	\$47,184	0	\$0
323	Hospital / Institutional	0	\$0	0	\$0
324	Office / Bank	0	\$0	0	\$0
325	Public Works & Utilities	0	\$0	0	\$0
326	School / Educational	0	\$0	0	\$0
327	Store / Restaurant	0	\$0	0	\$0
328	Nonresidential Building	9	\$6,369,466	7	\$857,929
	<u>Commercial/Industrial</u>				
436	Addition	3	\$199,242	4	\$51,956
437	Alterations	9	\$2,137,465	13	\$780,069
500	Reroofing	1	\$6,600	0	\$0
	<u>Other Structures</u>				
329	Pool, Retaining Wall, etc	7	\$172,633	15	\$367,455
106	Manufactured Home	27	\$0	23	\$0
	Sub Total	281	\$23,880,363	388	\$14,789,539
Code	Miscellaneous Permits				
700	Mechanical	141	\$1,091,188	150	\$735,711
710	Plumbing	86	\$565,391	93	\$524,779
	Sub Total	227	\$1,656,579	243	\$1,260,490
	Total	508	\$25,536,942	631	\$16,050,029

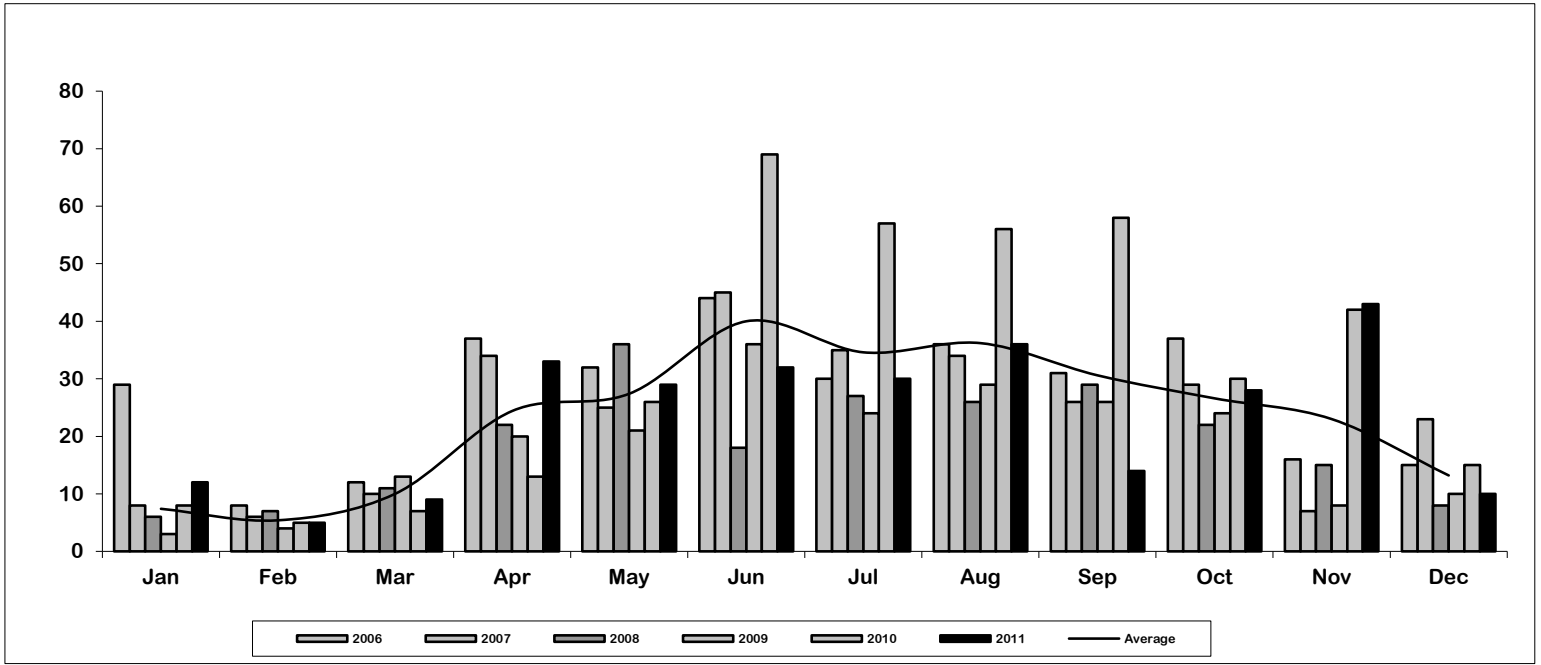
Building Permits Issued	2015		2014	
	No.	Valuation	No.	Valuation
<u>Cities</u>				
Oronoco	0	\$0	0	\$0
Stewartville	160	\$7,180,434	283	\$5,787,769
Sub Total	160	\$7,180,434	283	\$5,787,769
<u>Townships</u>				
Eyota	6	\$919,571	7	\$538,227
Marion	70	\$6,568,742	69	\$6,059,144
Oronoco	43	\$9,072,388	29	\$2,404,399
Quincy	2	\$139,228	0	\$0
Viola	0	\$0	0	\$0
Sub Total	121	\$16,699,929	105	\$9,001,770
Total	281	\$23,880,363	388	\$14,789,539
Total	281	\$23,880,363	388	\$14,789,539

Building Permits
Olmsted County Inspection's Division

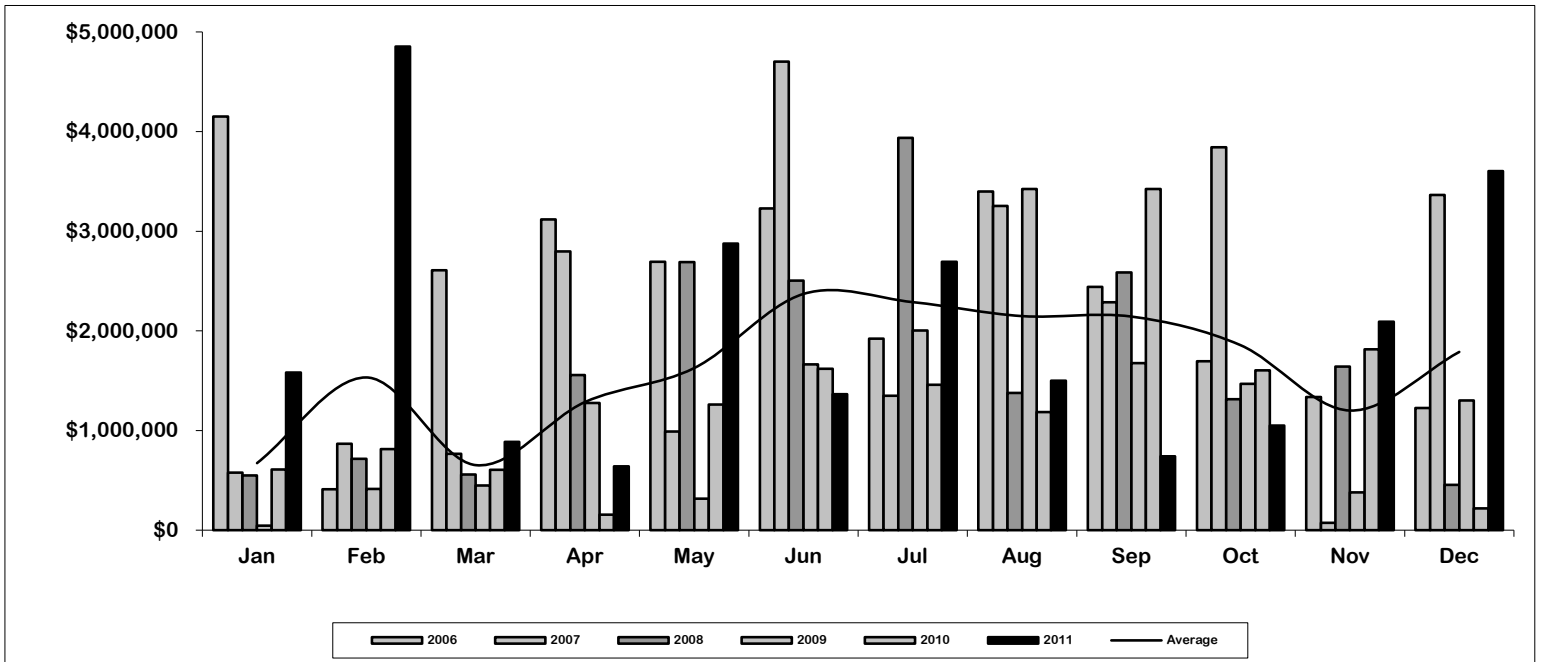
Building Permits Issued	2015		2014	
	No.	Valuation	No.	Valuation
January	12	\$1,582,580	8	\$608,695
February	5	\$4,854,534	5	\$813,010
March	9	\$885,512	7	\$605,039
April	33	\$639,101	13	\$155,912
May	29	\$2,874,490	26	\$1,261,184
June	32	\$1,364,093	69	\$1,619,481
July	30	\$2,692,290	57	\$1,459,092
August	36	\$1,501,466	56	\$1,184,070
September	14	\$741,978	58	\$3,424,444
October	28	\$1,048,524	30	\$1,605,387
November	43	\$2,093,163	42	\$1,814,137
December	10	\$3,602,632	15	\$219,088
Total	281	\$23,880,363	386	\$14,769,539

January - December 2015

Olmsted County Inspection's Division



Total Permits



Total Valuation

January - December 2015
Olmsted County Inspection's Division

Code	Building Permits	City of Oronoco				City of Stewartville			
		2015		2014		2015		2014	
		No.	Valuation	No.	Valuation	No.	Valuation	No.	Valuation
	<u>New Residential</u>								
101	1 Family (Detached)	0	\$0	0	\$0	8	\$1,660,153	11	\$2,171,642
102	1 Family (Attached)	0	\$0	0	\$0	2	\$315,964	4	\$598,860
103	2 Family Dwelling	0	\$0	0	\$0	0	\$0	0	\$0
104	3-4 Unit Building	0	\$0	0	\$0	0	\$0	4	\$683,322
105	5 Unit Building	0	\$0	0	\$0	0	\$0	0	\$0
438	Garage	0	\$0	0	\$0	2	\$48,431	1	\$23,593
	<u>Residential</u>								
432	Deck	0	\$0	0	\$0	32	\$73,090	33	\$83,710
433	Addition	0	\$0	0	\$0	8	\$158,694	4	\$18,220
434	Alterations	0	\$0	0	\$0	66	\$542,486	183	\$1,593,871
439	Garage Addition	0	\$0	0	\$0	1	\$12,704	0	\$0
	<u>New Commercial/Indust.</u>								
213	Hotel or Motel	0	\$0	0	\$0	0	\$0	0	\$0
318	Recreational	0	\$0	0	\$0	1	\$11,105	0	\$0
319	Church / Religious	0	\$0	0	\$0	0	\$0	0	\$0
320	Industrial / Warehouse	0	\$0	0	\$0	3	\$2,101,862	0	\$0
321	Parking Garage	0	\$0	0	\$0	0	\$0	0	\$0
322	Service / Repair Station	0	\$0	0	\$0	1	\$47,184	0	\$0
323	Hospital / Institutional	0	\$0	0	\$0	0	\$0	0	\$0
324	Office / Bank	0	\$0	0	\$0	0	\$0	0	\$0
325	Public Works & Utilities	0	\$0	0	\$0	0	\$0	0	\$0
326	School / Educational	0	\$0	0	\$0	0	\$0	0	\$0
327	Store / Restaurant	0	\$0	0	\$0	0	\$0	0	\$0
328	Nonresidential Building	0	\$0	0	\$0	1	\$79,753	4	\$89,025
	<u>Commercial/Industrial</u>								
436	Addition	0	\$0	0	\$0	0	\$0	3	\$47,141
437	Alterations	0	\$0	0	\$0	8	\$2,112,465	11	\$390,310
500	Reroofing	0	\$0	0	\$0	1	\$6,600	0	\$0
	<u>Other Structures</u>								
329	Pool, Retaining Wall, etc	0	\$0	0	\$0	1	\$9,943	5	\$88,075
106	Manufactured Home	0	\$0	0	\$0	25	\$0	20	\$0
	Sub Total	0	\$0	0	\$0	160	\$7,180,434	283	\$5,787,769
Code	Miscellaneous Permits								
700	Mechanical	0	\$0	0	\$0	47	\$526,220	48	\$209,505
710	Plumbing	0	\$0	0	\$0	38	\$215,059	39	\$175,669
	Sub Total	0	\$0	0	\$0	85	\$741,279	87	\$385,174
	Total	0	\$0	0	\$0	245	\$7,921,713	370	\$6,172,943

January - December 2015
Olmsted County Inspection's Division

Code	Building Permits	Eyota Township				Marion Township				Oronoco Township			
		2015		2014		2015		2014		2015		2014	
		No.	Valuation	No.	Valuation	No.	Valuation	No.	Valuation	No.	Valuation	No.	Valuation
	<u>New Residential</u>												
101	1 Family (Detached)	2	\$229,469	1	\$28,596	20	\$5,421,858	16	\$3,990,240	7	\$2,276,575	7	\$2,018,074
102	1 Family (Attached)	0	\$0	0	\$0	0	\$0	0	\$0	0	\$0	0	\$0
103	2 Family Dwelling	0	\$0	0	\$0	0	\$0	0	\$0	0	\$0	0	\$0
104	3-4 Unit Building	0	\$0	0	\$0	0	\$0	0	\$0	0	\$0	0	\$0
105	5 Unit Building	0	\$0	0	\$0	0	\$0	0	\$0	0	\$0	0	\$0
438	Garage	0	\$0	2	\$327,199	16	\$718,633	10	\$369,165	5	\$411,538	2	\$85,174
	<u>Residential</u>												
432	Deck	0	\$0	2	\$12,240	13	\$74,706	8	\$47,130	9	\$57,143	3	\$21,360
433	Addition	0	\$0	0	\$0	2	\$15,902	6	\$191,347	6	\$251,939	2	\$91,322
434	Alterations	1	\$10,500	0	\$0	8	\$113,854	16	\$195,841	4	\$40,815	8	\$88,977
439	Garage Addition	0	\$0	0	\$0	4	\$91,375	2	\$43,755	1	\$44,421	1	\$48,492
	<u>New Commercial/Indust.</u>												
213	Hotel or Motel	0	\$0	0	\$0	0	\$0	0	\$0	0	\$0	0	\$0
318	Recreational	0	\$0	0	\$0	0	\$0	0	\$0	0	\$0	0	\$0
319	Church / Religious	0	\$0	0	\$0	0	\$0	0	\$0	0	\$0	0	\$0
320	Industrial / Warehouse	0	\$0	0	\$0	0	\$0	0	\$0	1	\$125,328	0	\$0
321	Parking Garage	0	\$0	0	\$0	0	\$0	0	\$0	0	\$0	0	\$0
322	Service / Repair Station	0	\$0	0	\$0	0	\$0	0	\$0	0	\$0	0	\$0
323	Hospital / Institutional	0	\$0	0	\$0	0	\$0	0	\$0	0	\$0	0	\$0
324	Office / Bank	0	\$0	0	\$0	0	\$0	0	\$0	0	\$0	0	\$0
325	Public Works & Utilities	0	\$0	0	\$0	0	\$0	0	\$0	0	\$0	0	\$0
326	School / Educational	0	\$0	0	\$0	0	\$0	0	\$0	0	\$0	0	\$0
327	Store / Restaurant	0	\$0	0	\$0	0	\$0	0	\$0	0	\$0	0	\$0
328	Nonresidential Building	2	\$658,802	1	\$54,446	0	\$0	2	\$714,458	6	\$5,630,911	0	\$0
	<u>Commercial/Industrial</u>												
436	Addition	0	\$0	0	\$0	1	\$9,000	1	\$4,815	2	\$190,242	0	\$0
437	Alterations	0	\$0	1	\$115,746	0	\$0	1	\$274,013	1	\$25,000	0	\$0
500	Reroofing	0	\$0	0	\$0	0	\$0	0	\$0	0	\$0	0	\$0
	<u>Other Structures</u>												
329	Pool, Retaining Wall, etc	1	\$20,800	0	\$0	4	\$123,414	6	\$228,380	1	\$18,476	4	\$51,000
106	Manufactured Home	0	\$0	0	\$0	2	\$0	1	\$0	0	\$0	2	\$0
	Sub Total	6	\$919,571	7	\$538,227	70	\$6,568,742	69	\$6,059,144	43	\$9,072,388	29	\$2,404,399
Code	Miscellaneous Permits												
700	Mechanical	5	\$22,000	3	\$30,000	64	\$387,643	68	\$305,835	23	\$146,575	31	\$190,371
710	Plumbing	3	\$22,000	3	\$13,500	32	\$243,482	29	\$184,350	12	\$82,350	22	\$151,260
	Sub Total	8	\$44,000	6	\$43,500	96	\$631,125	97	\$490,185	35	\$228,925	53	\$341,631
	Total	14	\$963,571	13	\$581,727	166	\$7,199,867	166	\$6,549,329	78	\$9,301,313	82	\$2,746,030

January - December 2015
Olmsted County Inspection's Division

Code	Building Permits	Quincy Township				Viola Township			
		2015		2014		2015		2014	
		No.	Valuation	No.	Valuation	No.	Valuation	No.	Valuation
	<u>New Residential</u>								
101	1 Family (Detached)	0	\$0	0	\$0	0	\$0	0	\$0
102	1 Family (Attached)	0	\$0	0	\$0	0	\$0	0	\$0
103	2 Family Dwelling	0	\$0	0	\$0	0	\$0	0	\$0
104	3-4 Unit Building	0	\$0	0	\$0	0	\$0	0	\$0
105	5 Unit Building	0	\$0	0	\$0	0	\$0	0	\$0
438	Garage	1	\$59,228	0	\$0	0	\$0	0	\$0
	<u>Residential</u>								
432	Deck	0	\$0	0	\$0	0	\$0	0	\$0
433	Addition	0	\$0	0	\$0	0	\$0	0	\$0
434	Alterations	1	\$80,000	0	\$0	0	\$0	0	\$0
439	Garage Addition	0	\$0	0	\$0	0	\$0	0	\$0
	<u>New Commercial/Indust.</u>								
213	Hotel or Motel	0	\$0	0	\$0	0	\$0	0	\$0
318	Recreational	0	\$0	0	\$0	0	\$0	0	\$0
319	Church / Religious	0	\$0	0	\$0	0	\$0	0	\$0
320	Industrial / Warehouse	0	\$0	0	\$0	0	\$0	0	\$0
321	Parking Garage	0	\$0	0	\$0	0	\$0	0	\$0
322	Service / Repair Station	0	\$0	0	\$0	0	\$0	0	\$0
323	Hospital / Institutional	0	\$0	0	\$0	0	\$0	0	\$0
324	Office / Bank	0	\$0	0	\$0	0	\$0	0	\$0
325	Public Works & Utilities	0	\$0	0	\$0	0	\$0	0	\$0
326	School / Educational	0	\$0	0	\$0	0	\$0	0	\$0
327	Store / Restaurant	0	\$0	0	\$0	0	\$0	0	\$0
328	Nonresidential Building	0	\$0	0	\$0	0	\$0	0	\$0
	<u>Commercial/Industrial</u>								
436	Addition	0	\$0	0	\$0	0	\$0	0	\$0
437	Alterations	0	\$0	0	\$0	0	\$0	0	\$0
500	Reroofing	0	\$0	0	\$0	0	\$0	0	\$0
	<u>Other Structures</u>								
329	Pool, Retaining Wall, etc	0	\$0	0	\$0	0	\$0	0	\$0
106	Manufactured Home	0	\$0	0	\$0	0	\$0	0	\$0
	Sub Total	2	\$139,228	0	\$0	0	\$0	0	\$0
Code	Miscellaneous Permits								
700	Mechanical	2	\$8,750	0	\$0	0	\$0	0	\$0
710	Plumbing	1	\$2,500	0	\$0	0	\$0	0	\$0
	Sub Total	3	\$11,250	0	\$0	0	\$0	0	\$0
	Total	5	\$150,478	0	\$0	0	\$0	0	\$0