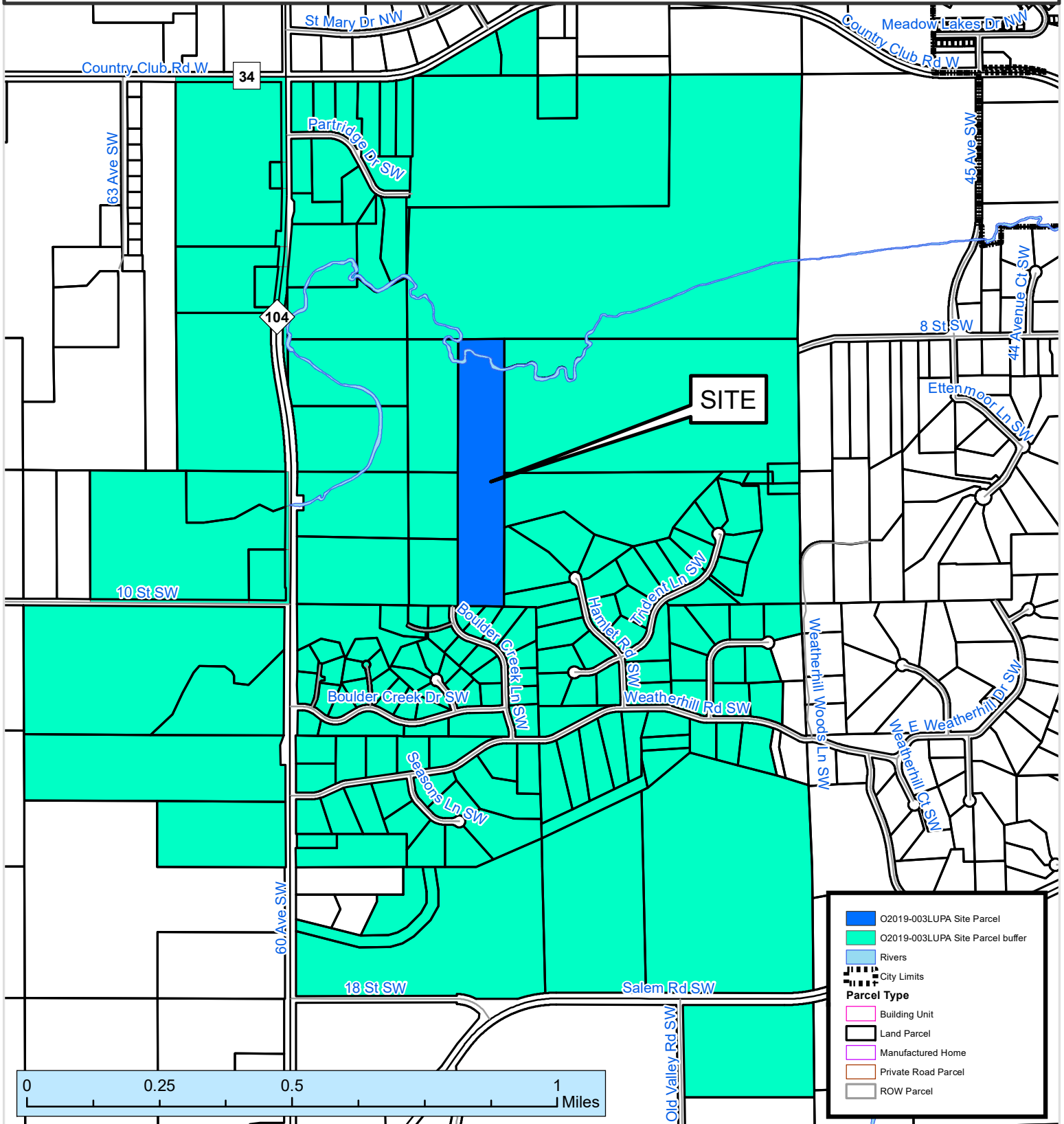


2640 ft. Notification Area of

Olmsted County Land Use Plan Amendment #O2019-003LUPA by Rochester Township to redesignate approximately 30 acres from "Urban Service Area" to "Resource Protection/Potential Suburban" on the Olmsted County Future Land Use Map. The property is located in the East 1/2 of the Southwest 1/4 of Section 6, Rochester Township, west of Lilly Farm Subdivision and north of Boulder Creek Subdivision.



This map prepared by the GIS Division, Olmsted County Planning Department. Olmsted County is not responsible for omissions or errors contained herein. If discrepancies are found within this map, please notify the GIS Division, Olmsted County Planning Department, 2122 Campus Drive SE Rochester MN 55904 (507) 328-7100.

Map Date: 12/27/2019

