

OLMSTED SOIL AND WATER CONSERVATION DISTRICT

2122 Campus Drive SE, Suite 200
Rochester, Minnesota 55904
Phone (507) 328-7070

State Buffer Law Initiative

October 25, 2018

RE: Olmsted County Buffer Compliance Tracking & Review procedures

In order to comply with the Board of Water and Soil Resources (BWSR) guidance pursuant to Minn. Stat 103.48 subd. 6, the following steps will describe how the Olmsted Soil and Water Conservation District (SWCD) will track progress toward long term compliance on parcels subject to the Buffer Law in Olmsted County. Parcels will be evaluated at least once every three years.

A. COMPLIANCE TRACKING OF ALL PARCELS SUBJECT TO THE BUFFER LAW

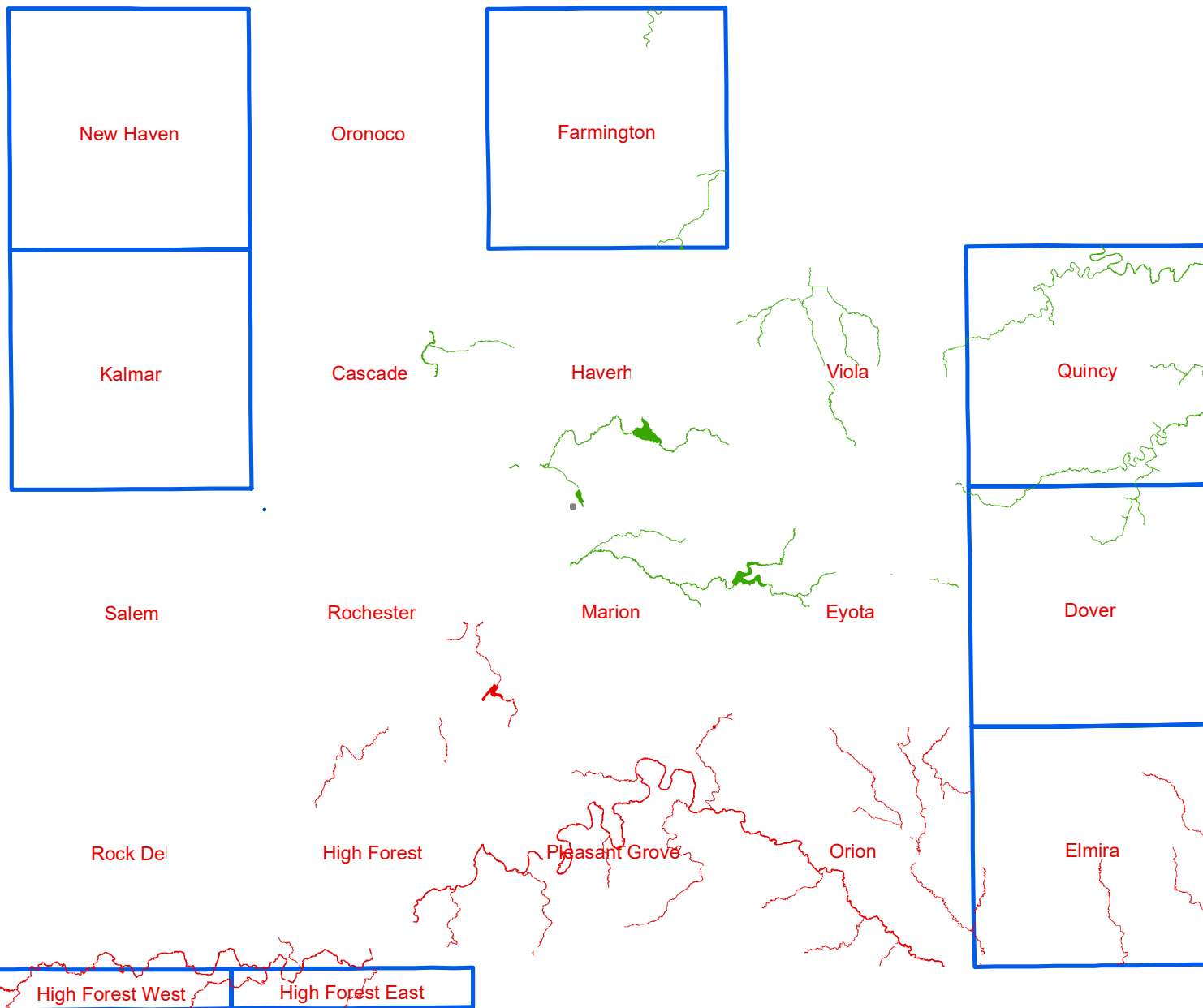
1. The SWCD will utilize the BWSR Buffer Compliance Tracking Tool (BuffCAT) for all annual and compliance reporting requirements.
2. The SWCD will utilize the most current GIS and aerial photography available in the review.
3. The SWCD will review approximately 1/3 of the required parcels each year over the three-year review period starting in 2019 (Attachment A).
4. Letters will be sent out to landowners who parcels are identified as potentially non-compliant. Permission for access will be requested at this time.
5. Field reviews will be conducted if the desktop review indicates a question of compliance.
6. The SWCD can provide technical assistance per landowner request to re-establish compliance.

B. RANDOM SPOT CHECKS

1. The SWCD will conduct a random spot check on 25-50 parcels outside of the scheduled area annually.
2. Potential areas for more frequent review:
 - a. Alternative practice – grassed waterways
 - b. Previously non-compliant parcels

C. PROCESS TO HANDLE COMPLAINTS

1. The SWCD will handle all complaints utilizing the same procedures as outlined in the annual compliance review process above.
2. Landowners refusing to seed down the required buffer will be referred to the BWSR Buffer and Soil Loss Specialist for further action by the state.

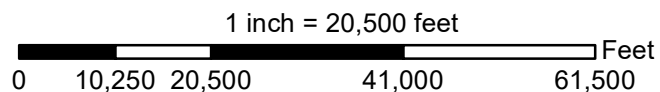


State Buffer Law Initiative Compliance Tracking and Review Map

Legend

1/3 Review Areas

- A
- B
- C
- Townships
- CtyLmts



Maps are for graphical purposes only.
They do not represent a legal survey.

